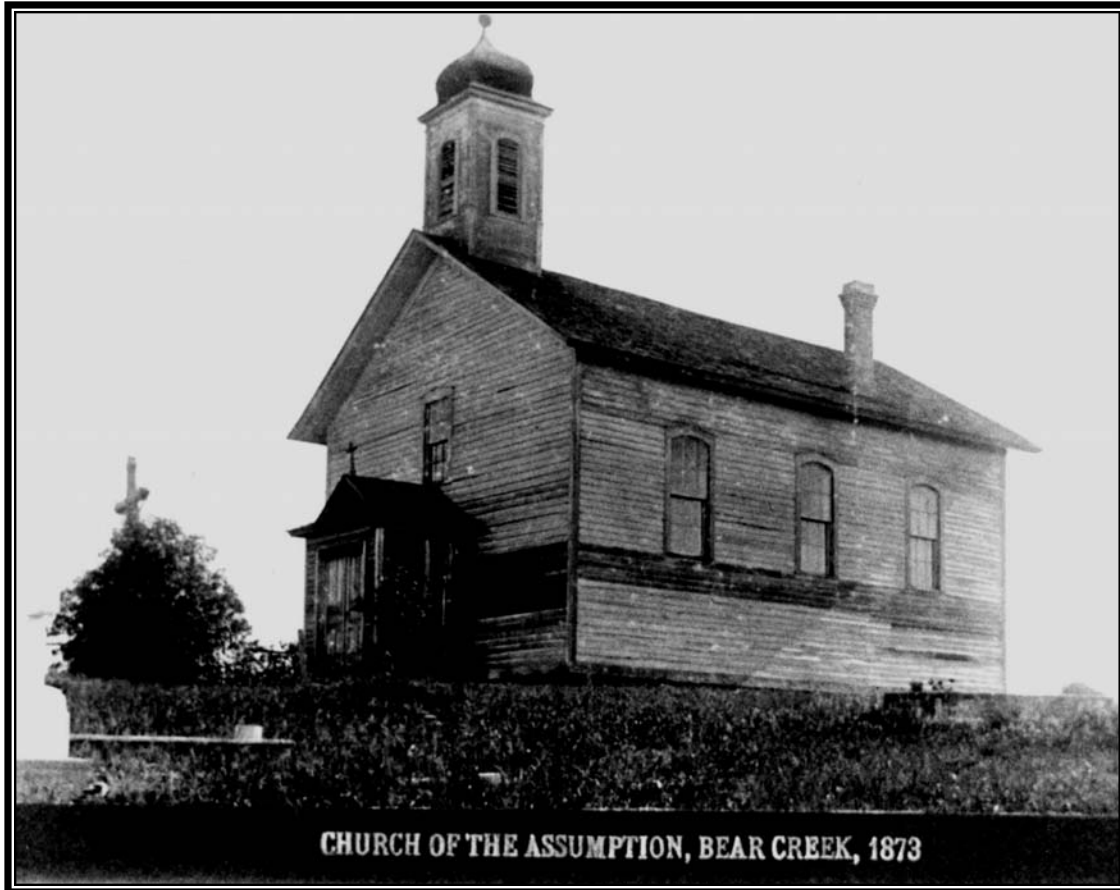


Church of the Assumption, Bear Creek, Minnesota

A small church was built in 1872 four miles south of Silver Lake, Minnesota by a group of Czech Catholics who immigrated to Rich Valley Township from eastern and southern Bohemia.

Itinerant missionaries said Mass in private homes prior to the building of the church. Among them were Father Stern (known locally as Father Juczda) and Father Juskiewicz.

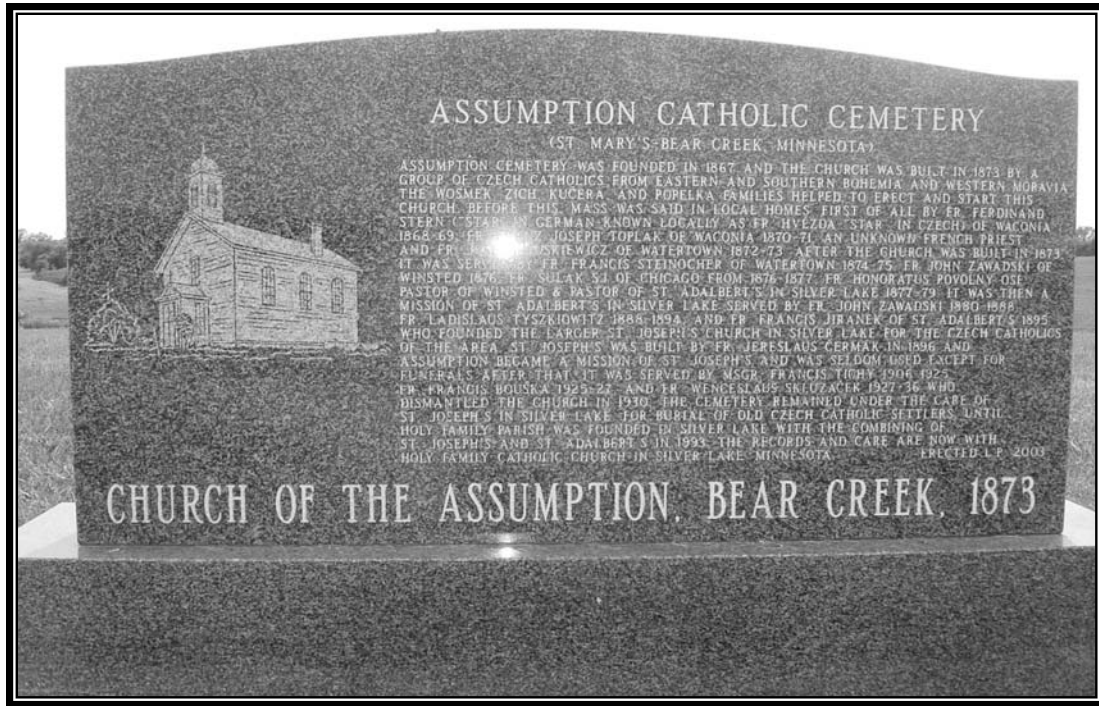


Father Steinacher celebrated Mass at the Church of the Assumption from 1872 to 1875 and was followed by Father Sulak, S. J. of Chicago from 1876 to 1877; Father Povolny, pastor at Winsted from 1878 to 1882 and by the pastor at St. Adalberts Church, Silver Lake from 1882 to 1893 when his successor Rev. Father Jiranek was given charge of the Bear Creek Bohemian Catholics.

As the Czech population of Silver Lake increased, the need of a church was apparent and on April 6, 1895, St. Joseph's Church was incorporated with Bear Creek as a mission. Rev. J. Cermak took charge as pastor, built the church and the rectory the next year and remained until 1906. His successor, Rev. W. J. Skluzacek, closed the Mission Church and dismantled it. The Bear Creek cemetery which opened in 1867 is still used.

REFERENCES:

McLeod County History Book – 1978, page 79,



Church of the Assumption, Bear Creek, 1873
St Mary's Bear Creek, Minnesota

The marker at the entrance to the cemetery, erected in 2003

ASSUMPTION CATHOLIC CEMETERY (ST MARY'S-BEAR CREEK, MINNESOTA)

ASSUMPTION CEMETERY WAS FOUNDED IN 1867 AND THE CHURCH WAS BUILT IN 1873 BY A GROUP OF CZECH CATHOLICS FROM EASTERN AND SOUTHERN BOHEMIA AND WESTERN MORAVIA. THE WOSMEK, ZICH, KUCERA AND POPELKA FAMILIES HELPED TO ERECT AND START THIS CHURCH. BEFORE THIS, MASS WAS SAID IN LOCAL HOMES, FIRST OF ALL BY FR. FERDIAND STERN ("STAR" IN GERMAN-KNOWN LOCALLY AS FR. HVEZDA "STAR" IN CZECH) OF WACONIA 1868-69. FR. JOSEPH TOPLAK OF WACONIA 1870-71, AN UNKNOWN FRENCH PRIEST, AND FR. USKIEWICS OF WATERTOWN 1872-73. AFTER THE CHURCH WAS BUILT IN 1873 IT WAS SERVED BY FR. FRANCIS STEINOCHER OF WATERTOWN 1874-75. FR. JOHN ZAWADSKI OF WINSTED 1876. FR. SULAK SJ OF CHICAGO FROM 1876-1877. FR. HONORATUS POVOLNY OSF PASTOR OF WINSTED & PASTOR OF ST. ADALBERT'S IN SILVER LAKE 1877-79. IT WAS THEN A MISSION OF ST. ADALBERT'S IN SILVER LAKE SERVED BY FR. JOHN ZAWADSKI 1880-1888.

FR. LADISLAUS TYSZKIOWITZ 1888-1894, AND FR. FRANCIS JIRANEK OF ST. ADALBERT'S 1895 WHO FOUNDED THE LARGER ST. JOSEPH'S CHURCH IN SILVER LAKE FOR THE CZECH CATHOLICS OF THE AREA. ST. JOSEPH'S WAS BUILT BY FR. JERESLAUS CERMAK IN 1896 AND ASSUMPTION BECAME A MISSION OF ST. JOSEPH'S AND WAS SELDOM USED EXCEPT FOR FUNERAL'S AFTER THAT IT WAS SERVED BY MSGR. FRANCIS TICHY 1906-1925. FR. FRANCIS BOUSKA 1925-27, AND FR. WENCESLAUS SKLUZACEK 1927-36 WHO DISMANTLED THE CHURCH IN 1930. THE CEMETERY REMAINED UNDER THE CARE OF ST. JOSEPH'S IN SILVER LAKE FOR BURIAL OF OLD CZECH SETTLERS UNTIL HOLY FAMILY PARISH WAS FOUNDED IN SILVER LAKE WITH THE COMBINING OF ST. JOSEPH'S AND ST. ADALBERT'S IN 1993. THE RECORDS AND CARE ARE NOW WITH HOLY FAMILY CATHOLIC CHURCH IN SILVER LAKE, MINNESOTA.

Church of the Assumption, Bear Creek, 1873

St Mary's Bear Creek, Minnesota

The marker at the entrance to the cemetery.



Bear Creek Cemetery

Entrance Right Side – Taken 2006

Church of The Assumption, Bear Creek, Minnesota

II	III	IV	V	VI	VII	VIII	IX	X
12	23	34 Kostelka	45 Jaracka	56 Pillrich ^{K. Prostij}	67 Kornar J.	78 Mraz A.	89 Bryelta	96 Kovotny J.
13	24	35 Kostelka	46 Lantka A.	57 Tupa S.	68 F. Vasimek	79 Stibal J.	90 Micka J.	97 Cacka v. n.
14	25	36 Buri J.	47 Svihel J.	58 Stibal J.	69 Simet J.	80 Matausik	91 Urban J.	98 Draboi J.
15	26	37 Hemza J.	48 Fl. Droua	59 Pisuta J.	70 Milkanly J.	81 Cervenys ^{Prostij}	92 Pokorny	99 Urban J.
16	27	38 Bouska	49 Jilek J.	60 Cekal J.	71 Vanous A.	82 Vosmek J.	93 Capek U.	100 Strajpek U.
17	28	39 Hlavka J.	50 Dramik J.	61 Polivka J.	72 Bour ^{Henry Prostij} Pavlin	83 Vosmek P.	94 Uchian U.	101 Zavoral
18	29	40 Dolezal J.	51 Vacek J.	62 Draboi J.	73 Fiala J.	84 Vosmek J.	95 Urban J.	102 Zavoral
19	30	41 Krejci J.	52 Cacka A.	63 Papella U.	74 Papella J.	85 Navstila		
20	31	42 Edward C. Pissig J.	53 Pavlis A.	64 Carmek J.	75 Poutile J.	86 Andele J.		H. L. L. T. v. n.
21	32	43 Pichard	54 Buri K.	65 Kottan J.	76 Smiida J.	87 Arndoff J.		P. v. n. J. p. n. v. t. c. h. t. e.
22	33	44 H. v. n. J.	55 Urban J.	66 Navick J.	77 Papez U.	88 Arndoff J.		

Left Side Marker Map at Church of the Assumption at Bear Creek,
South Silver Lake, Minnesota

Church of The Assumption, Bear Creek, Minnesota

	XI	XII	XIII	XIV	XV	XVI	
	103	110	117 (Zejdelik)	128	139	150	171
	Emil Pukraty	Adrian J. J.	Oubineka	Miska f.	Mutis ar	Uben J. J.	
	104	111	118	129	140	151	170
	Kapcelly f.	Zicha J. J.	Picha J.	Navet f. j.	Motiva f. j.	Papova	
	105	112	119	130 pridaj!	141	152	169
	Mulva f.	Podkrajky J.	Fupa f.	Simi J. f.	Stacek J.	Pačka f.	Mrs. Maren
	106	113	120	181	142	153	168
	Pukraty V.	Bruic J. J.	Osniak f.	Osniak J.	Andela J.	Cervený J.	Franka Mar
	107	114	121	132	143	154	167
	Částel J.	Osniak J.	Lorenc J.	Andela J.	Záruba	Ruzicka K.	Antoni Kostec
	108	115	122	133	144	155	166
	Pukraty J.	Zicha J.	Simel J.	Navratilka	Mikes f.	Sule J.	Karolina Mura
	109	116	123	134	145	156	165
	Pukraty L.	Podkrajky J.	Lorenc J.	Ursinet J.	Lorenc f.	Ursinet J.	Novell Kar.
Bear Creek Cemetery			124	135	146	157	164
So. Silver Lake MN McLeod Co.			Kajpar J.	Zicha J.	Pukraty f.	Simel J.	Priest J. J. (Ward)
Kaple nyní!			125	136	147	158	163
			Kucera J.	Suchanek	Pesek V.	Pražák V.	Osniak J.
Pesky Kostelík			126	137	148	159	162
Končinná			Navratil f.	Zicha J.	Medved J.	Ruzicka J.	Pačka J.
			127	138	149	160	161
			Kucera J.	Bandas J.	Navratil J.	Zejdelik	M. Flint J. J.

Right side Marker Map at Church of the Assumption at Bear Creek, South Silver Lake, Minnesota